

The essence of your success



**ZEISS Spectroscopy for
Ethanol Producers**



Seeing beyond

Getting the most out of every drop

ZEISS Corona extreme

Better control means better quality – ZEISS Corona extreme provides corn-based ethanol producers the information they need to optimize processes and increase efficiency and profitability.

Producing ethanol is a complex process. To ensure the highest quality end product, every stage of the process needs to run smoothly and efficiently. In order for this to happen, you need to be able to measure and verify the quality of inbound corn.

ZEISS Corona extreme is ideal for application in the corn-based ethanol industry. Robust, accurate and dependable, Corona extreme is an in-line near-infrared (NIR) measurement system that uses chemometric calibrations to determine constituent percentages of agricultural products.

This allows you to optimize your process by testing corn in-line for moisture and starch content and adding exactly the right amount of fermentation enzymes.

Constantly monitoring moisture, protein, oil and fiber levels in distiller's dried grains with solubles (DDGS) can lead to a higher quality by-product and greater client satisfaction.

ZEISS Corona extreme is your dependable solution to optimize the efficiency of your production process and provide the highest possible quality.



Corn

Measuring point	Unloading
Measurement parameters	Moisture, starch, protein, oil, density



Ground corn

Measuring point	After milling
Measurement parameters	Moisture, starch, protein, oil



DDGS

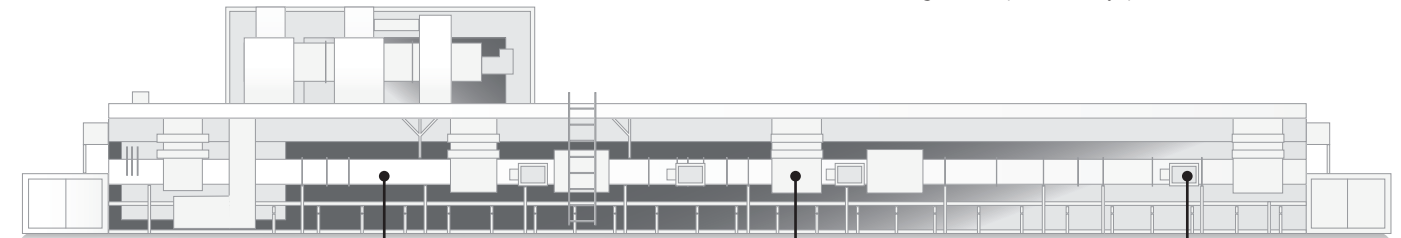
Measuring point	After distillation and drying
Measurement parameters	Moisture, protein, oil, fiber

Reliable results – in any conditions

Quality control at each step of the process

Your Benefits

- Fast in-line measurement of starch content
- Complete raw material analysis, allowing you to rate suppliers based on factors such as moisture and starch content.
- In-line measurement of corn both as whole grains and ground.
- Optimization of additives, allowing for reductions in production costs.
- Measurement and quality management of DDGS, allowing for a specified by-product.



Unloading

Raw material analysis of corn

Moisture, starch, protein, oil, density

After milling

Analysis of ground corn

Moisture, starch, protein, oil

After distillation

Analysis of DDGS, dried distiller's grain with solubles

Moisture, protein, oil, fiber

Spectrometer

- Spectral range: 950–1,650 nm
- Internal referencing

Housing

- IP 66, ATEX Zone 22
- Resistant against vibrations and shocks (up to 50 g)
- working temperature from -15 to 50 °C

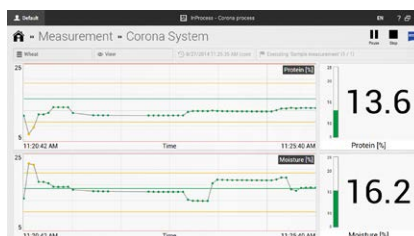
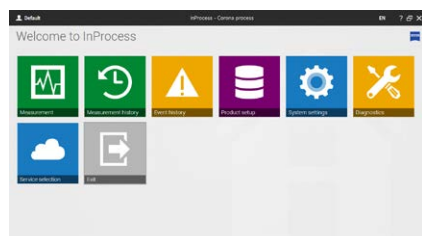
Integration

- EtherNet/IP
- Profibus
- Modbus
- Digital and analog in/outs
- OPC
- SQL database



Innovative, invaluable, intuitive: InProcess

ZEISS InProcess software is used to control one or more devices. It works perfectly with our spectrometer systems and allows you to set up and execute measurements as well as visualize or archive your data. It is easy to integrate into your IT systems with OPC, CenSocket and SQL data and comes with a GUI.



General information

- Simultaneous activation of more than one spectrometer
- Support for calibrations (chemometric models) created using standard chemometric software such as GRAMS, Unscrambler or UCAL
- Filter function for the elimination of implausible spectra
- Available in Chinese, German, English, French, Italian, Polish, Portuguese, Russian and Spanish

Measurement

- Display of measurement as a spectrum, value or trend
- Automatic warning when limit values are exceeded (definition of limit values and warning levels)
- Automatic measurement

Integration

- Communication with customized field bus systems and industry standards
- Customizable measurement result display

Measurement history

- Access to all historic measurement and referencing results
- Data export of spectra, measured values and sample information

Diagnosis

- Implementation of a self-test for spectrometer functionality inspection
- Simple provision of relevant servicing information at the touch of a button

User management

- Setup of dedicated user groups with different access levels

Technical data for the Corona extreme spectrometer

Spectrometer	diode array spectrometer
Polychromator	PGS
Measurement range	950–1,650 nm
Mean spectral pixel pitch	3 nm
Spectral resolution (half width at 1/10 max)	≤ 10 nm
Wavelength accuracy	≤ 1 nm
Wavelength reproducibility	≤ 0.1 nm
Light source	halogen
Protection standard	IP 66
Dimensions W x H x D	256 x 190.5 x 253 mm ³
Weight	10 kg
Range of operating temperatures	-15 °C to +50 °C
Power supply voltage	9–36 V --- SELV

If you are needing further information, you are welcome to contact us.

联系电话: +86 13964008535

邮箱: sdwisdom@126.com

www.sdwisdom.cn

山东智慧仪器有限公司

Shandong Wisdom Instrument Co.Ltd.

ZEISS光谱中国区域代理

地址: 山东省济南市历城区工业北路58号

